

**Transfer Student Off-Campus
Housing Information
June 04, 2025**

HOP

ON

BOARD



JOHNS HOPKINS
UNIVERSITY

Panelists

Staff



Jon Walter,
JHU Student/Community
Liaison

Staff



Jelytza Padro,
Off-Campus Housing Transition
Administrator

'28



Ember Gray,
Host

**OFF-CAMPUS HOUSING
& FINDING A NEW HOME**

OFF-CAMPUS HOUSING MILESTONES



Each student will go through each step which could take a few days or a few weeks.

THINGS TO CONSIDER

- Talk with your family and potential roommates to frame expectations: **cost, security, distance, amenities**, etc. Take the time to research and find the properties that meet your needs.
- Understand leasing process – different for different buildings. Have conversations now with possible co-signers.
- **READ, READ, READ...** Before you sign, read your lease. There are hidden clauses and responsibilities buried in leases waiting for you to find and understand their implications.



YOUR OPTIONS



Commercial
Properties

vs.

Residential
Properties



SEARCH



EXPENSES



BENEFITS



YOUR OPTIONS



Having a great experience.. on a budget

Commercial Properties



SEARCH

Commercial Property
BlueBook

Management Team

Emergency Maintenance

Security

Pest Control



BENEFITS

Additional Support



Local Commercial Properties

- 505 W. University
- 100 University West
- Allston
- Baltimorean
- The Broadview
- Campus Square
- The Carlyle
- Carolina
- Chadford
- HH Cresmont
- Guilford Manor
- Hopkins House
- Icon Residences
- Jefferson House
- The Marylander
- Miller's Court
- Nine East 33rd
- Remington Row
- St. Paul Court
- Telephone Building
- The Service Center
- University West
- Wyman Park
- Wyman Towers



YOUR OPTIONS



Having a great experience.. on a budget

Residential Properties



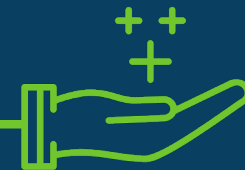
SEARCH

Off-Campus Housing
Database

Independence

Experience Baltimore

Large Groups*

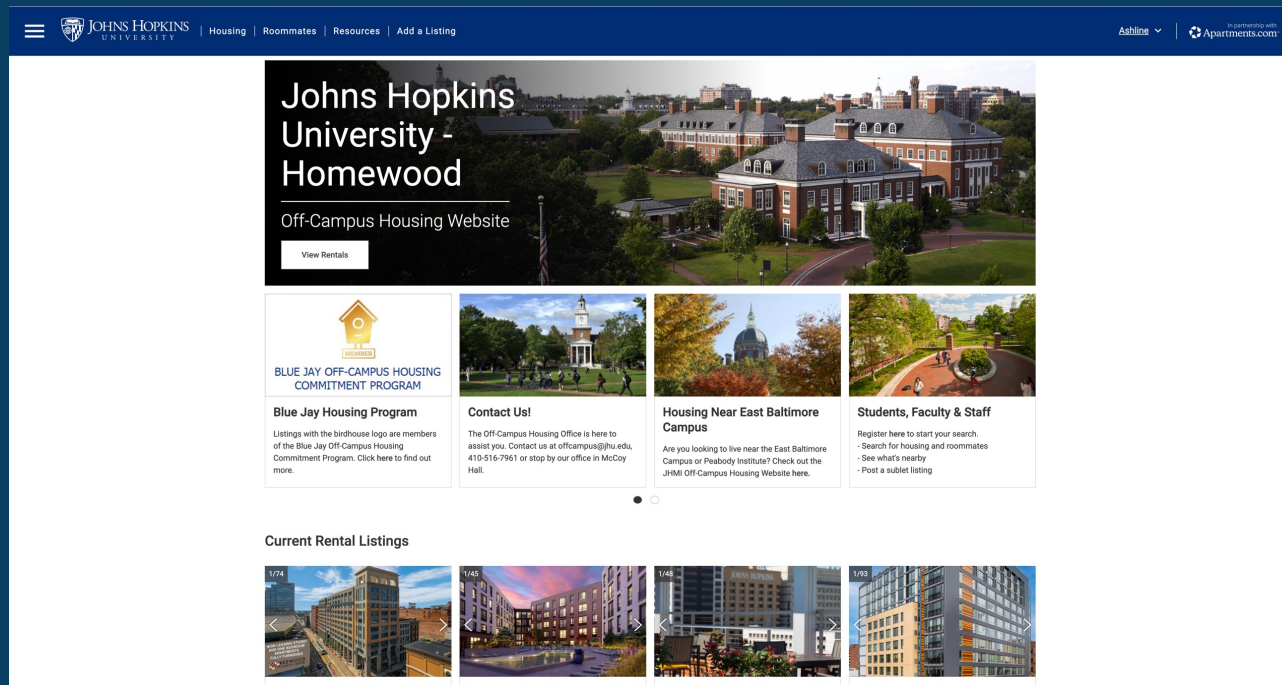


BENEFITS

Independence &
Community

Off-Campus Database

Search through a variety of listings



The screenshot shows the homepage of the Johns Hopkins University Off-Campus Housing Website. The header includes the university logo, navigation links for Housing, Roommates, Resources, and Add a Listing, and a user profile for Ashline. The main content area features a large banner for Johns Hopkins University - Homewood with a 'View Rentals' button. Below this are four informational cards: Blue Jay Off-Campus Housing Commitment Program, Contact Us!, Housing Near East Baltimore Campus, and Students, Faculty & Staff. At the bottom, there is a 'Current Rental Listings' section with a carousel of four apartment building images.



SEARCH

Off-Campus Housing Database

offcampushousing.jhu.edu

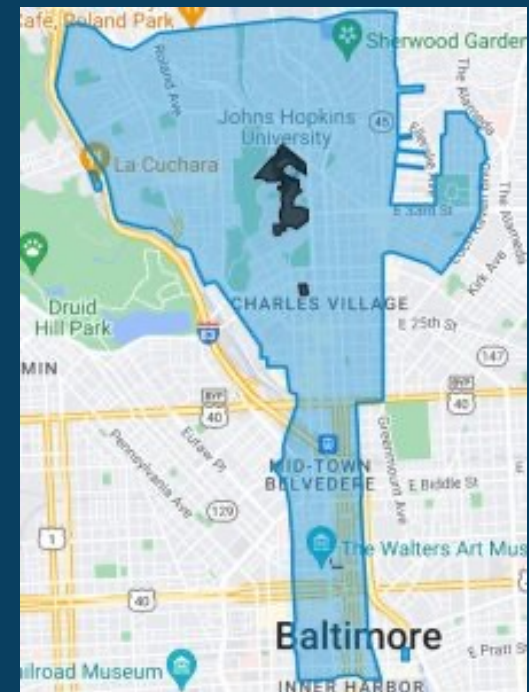
TRANSPORTATION

Johns Hopkins operates its own shuttle service that connects different areas of our campuses; including Commuter Routes, Circulator Routes, and Express Routes.

Blue Jay Night Ride is an on-demand service to and from locations within the service area. Ride requests are accepted 6 p.m.-2 a.m. Download the [TransLoc app](#) to request a ride directly and to see the shuttle system in real-time.

If you live close to campus or would like a walking escort back to your vehicle you can request a walking escort through the LiveSafe App.

For full shuttle and parking information you can visit <https://jhfre.jhu.edu/>





BUDGET & FINANCIAL AID



- Financial aid is based on tuition costs, books & personal expenses, and an estimate for **9 months** of housing and food expenses.
- The estimated amount of housing and food expenses for the **2026-27 academic year is \$15,842 or \$1,760 per month.**
- Disbursements are processed at the beginning of each semester. Students should plan to pay for any initial costs to be out of pocket.
- The refund received are intended to be used towards your off-campus expenses per your own discretion.

Distributing Financial Aid Across
9-MONTHS
AUGUST - MAY

Based on 2025-2026 Financial-Aid estimate for off-campus living expenses.

Expenses per month

INCOME

Financial Aid \$1,709

HOME EXPENSES

Rent \$993

Electric \$85

Heating \$75

Water \$12

Sewage \$7

Renter's Insurance \$28

Total Home Expenses \$1200

Remaining Balance \$509

LIVING EXPENSES

Meals \$375

Laundry \$25

Total Living Expenses \$400

Discretionary Funds \$109

**Based on Averages in a 2-Bedroom, 2-Person apartment*



RENTER'S INSURANCE



Is Renter's Insurance really necessary?

While **preparing a bath**, student got distracted and caused the tub to overflow onto the floor and into the apartments below. Management informed him that he was **financially responsible** for the **water damage** due to his negligence. The cost to repair the damaged was **\$30,000**.

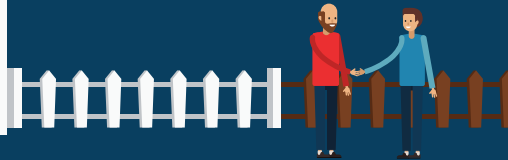
The student was **100% covered** through their renter's insurance.



COMMUNITY & YOU



Special Guests:
Jon Walter, Student Community Liaison



FRAME YOUR EXPECTATIONS



**Home & Property
Maintenance**



**Neighbor
Relations**



**Safety
Awareness**



**Trash &
Recycling**

THE HOMEWOOD AREA

Emergency Facilities

- 1 MedStar Union Memorial Hospital
- 2 Police Department

Restaurants

- 18 Papermoon
Artistic Diner
- 19 R. House
Variety of food vendors
- 20 Tambers
Indian diner
- 21 Kajiken
Japanese Restaurant

CAFES/COFFEE SHOPS

- 22 Bird in Hand
- 23 MOD Pizza
- 24 Starbucks
Charles Village & the Rotunda
- 25 Charmingtons
- 26 One World Cafe
Vegetarian & vegan menu

ST. PAUL STRIP

A central variety of restaurants, cafes, and local shops, including...

- | | |
|---|--|
| Chipotle
<i>Fast Mexican food</i> | Doner Bros
<i>Kebab shop</i> |
| Honeygrow
<i>Stir-fry & fruit desserts</i> | & Pizza
<i>Pizza and knots</i> |
| Potbelly
<i>Deli sandwiches</i> | Subway
<i>Deli sandwiches</i> |
| THB
<i>Gourmet bagelry</i> | Pure Green
<i>Juice & smoothies</i> |

THE AVENUE

A variety of artsy restaurants, cafes, and quirky local shops in Hampden.

Grocery Stores

- 3 Eddie's Market
- 4 Giant
Charles Village & Hampden
- 5 MOM's Market
- 6 Safeway

Convenience Stores

- 7 CVS
Pharmacy
- 8 Hopkins Deli
- 9 Walgreens
Rite Aid Pharmacy inside
- 10 University Market
- 11 7 Eleven
Charles Village, Remington & Hampden

Local Retailers

- 12 B. Willow
Plant & Botanical shop
- 13 Get Shredded
Second-Hand Boutique

BANKS

- 14 JHU Credit Union
- 15 Bank of America

DRY-CLEANERS

- 16 St Paul Cleaners
- 17 Super Laundromat



OFF-CAMPUS HOUSING OFFICE

Hopkins Square, Homewood Apartments | M-F, 8:30am-4:30pm

P: 410-516-7961

E: offcampus@jhu.edu

Still have questions?

You can contact us at:

Email: firstyear@jhu.edu

Text: (410) 941-3485